

# HEICO

## SEAL - OUTER DUCT

**Turbine Kinetics Part Number: 290-1206-1KT**

**Goodrich Part Number: 290-1206-1**

Next Higher Assembly Part Number: 290-1200-505, 290-1200-507, 290-1200-506, 290-1200-508  
- Nozzle Instl-Acoustic LH, RH

**Eligibility:**

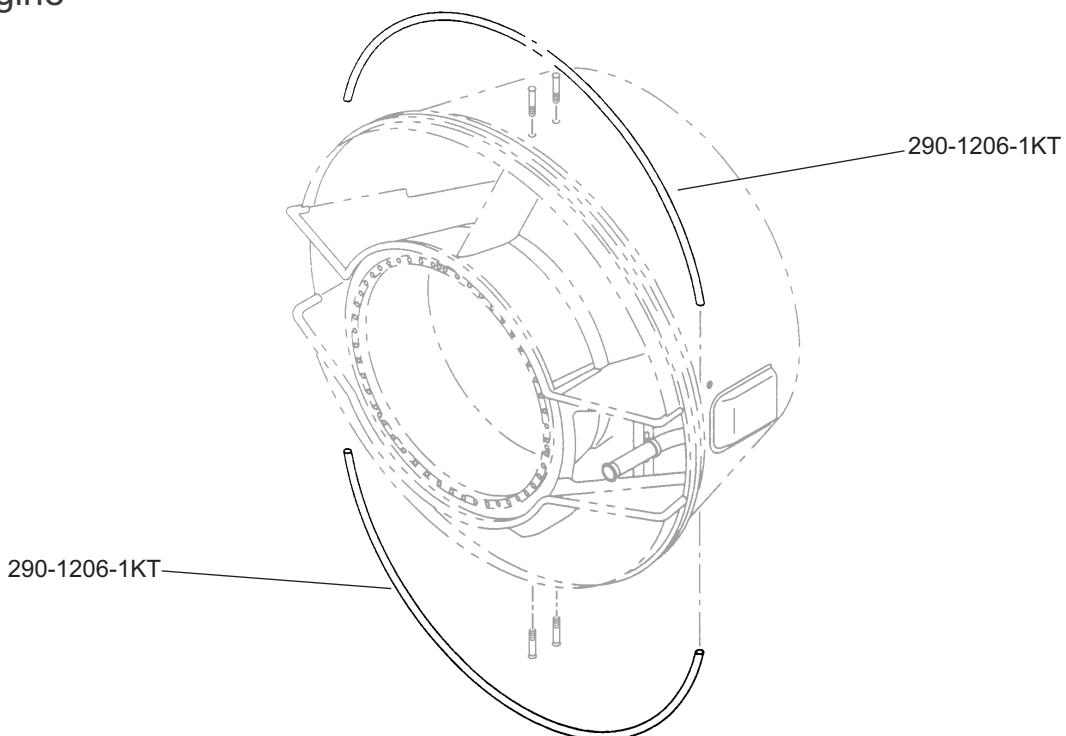
[See FAA PMA Supplement](#)

**IPC Reference:**

MD-90-78-10

**Quantity:**

4 per Engine



**Location:**

Engine Nozzle